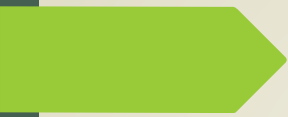





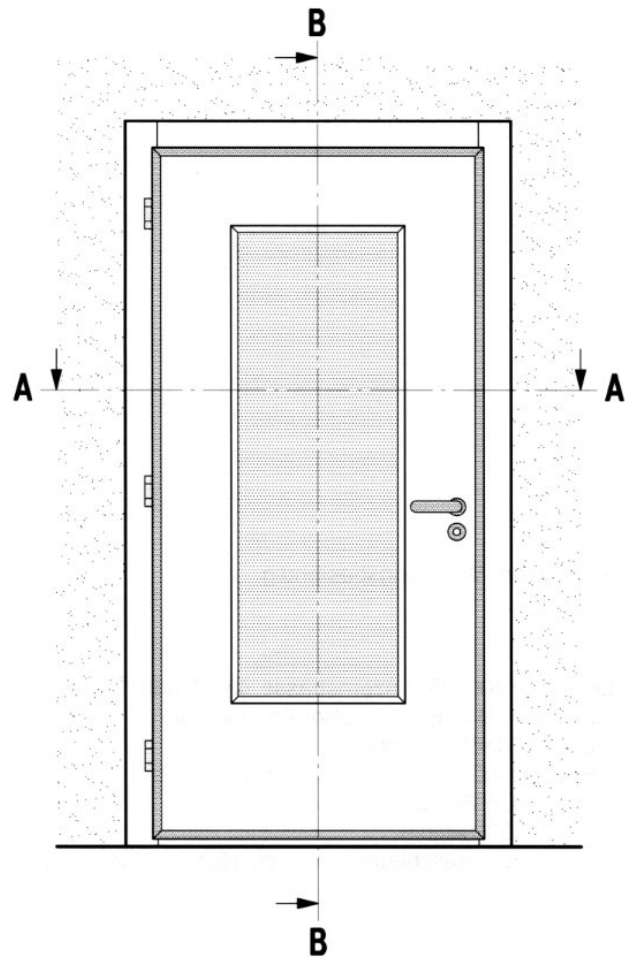
ZADATAK 1

PREGRADNA VRATA

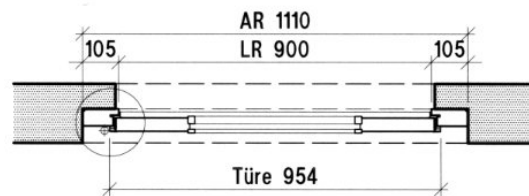
Puna pregradna vrata

- 
- 
1. Prema datom crtežu pregradnih/sobnih vrata prikazati:
 - a) Glavni crtež;
 - b) Crteže preseka (horizontalni i vertikalni presek);
 - c) Konstruktivnu šemu formiranja.
 - d) Iz kataloga okova izbati potreban okov i prikazati ga tabelarno

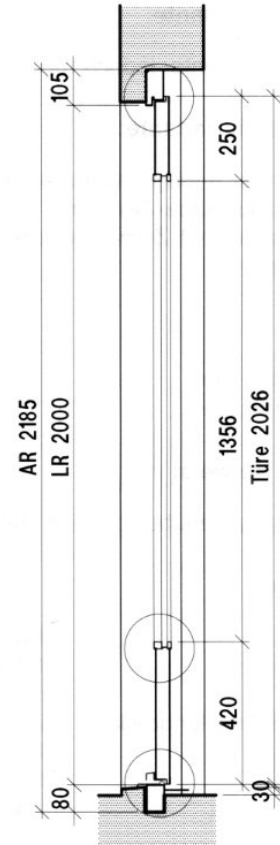
NAPOMENA: Razmeru i format papira izabrati samostalno.



Schnitt A-A

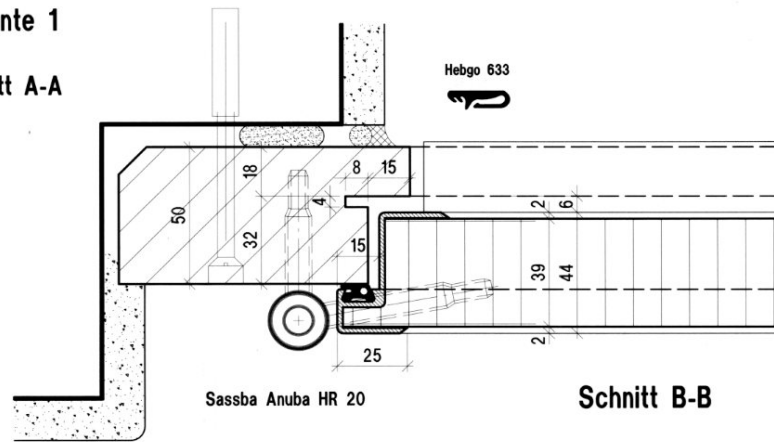


Schnitt B-B



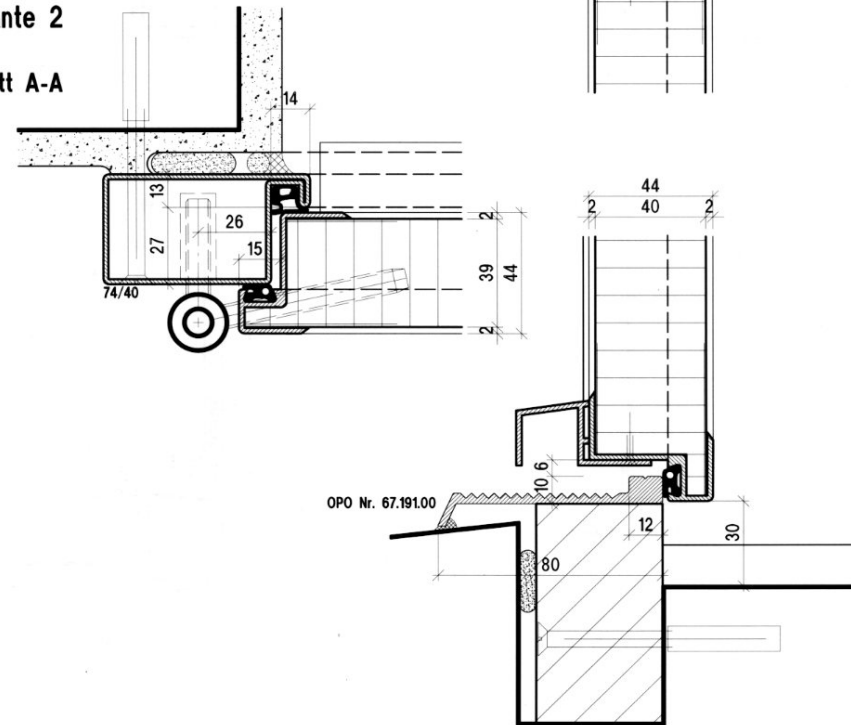
Variante 1

Schnitt A-A



Variante 2

Schnitt A-A



Schnitt B-B

